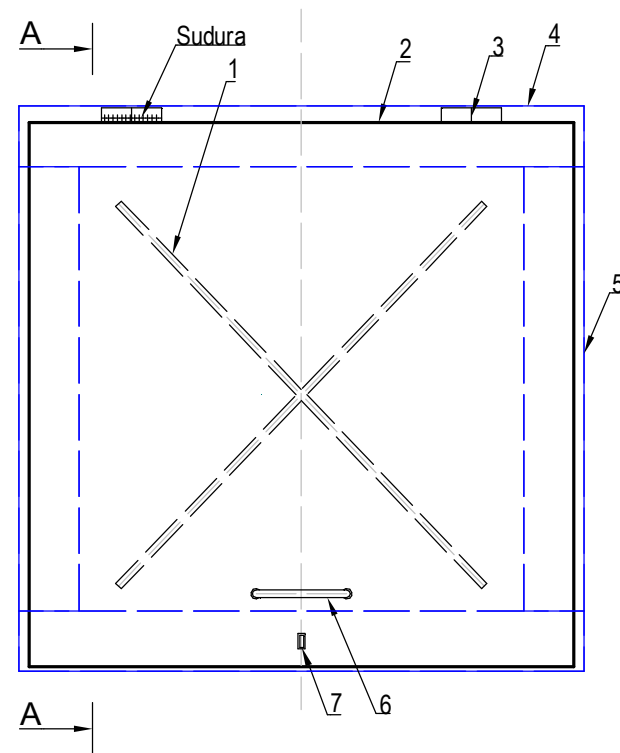
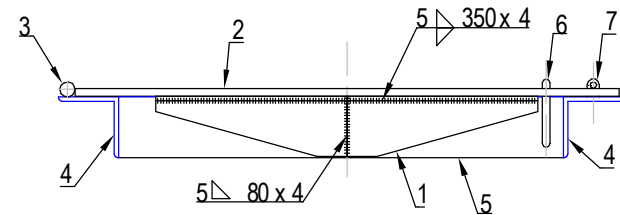


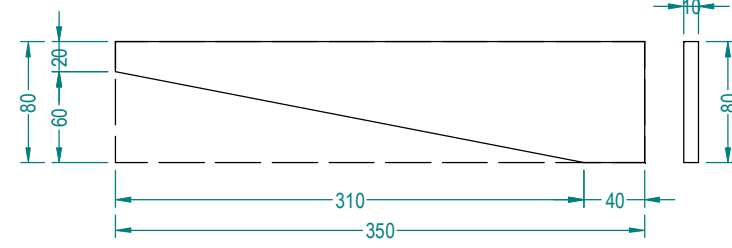
Vedere in plan capac vizitare  
scara 1:10



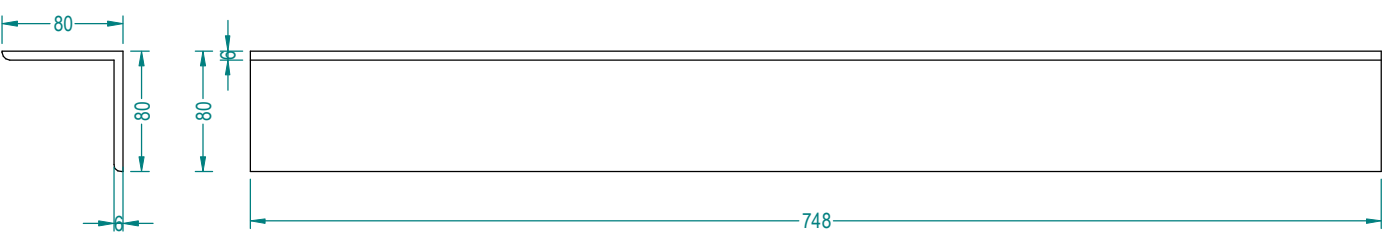
Sectione A - A  
scara 1:10



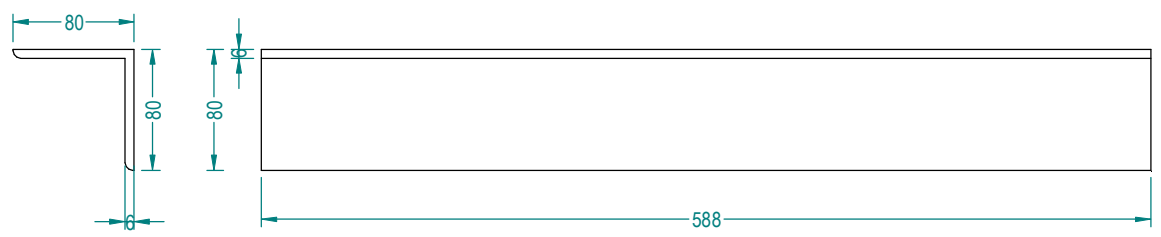
1 - 350 x 80 x 10  
scara 1:5



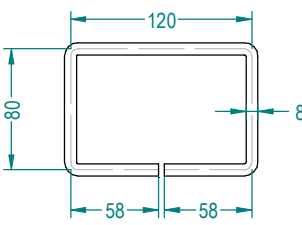
4 - Cornier 80 x 80 x 6  
scara 1:5



5 - Cornier 80 x 80 x 6  
scara 1:5



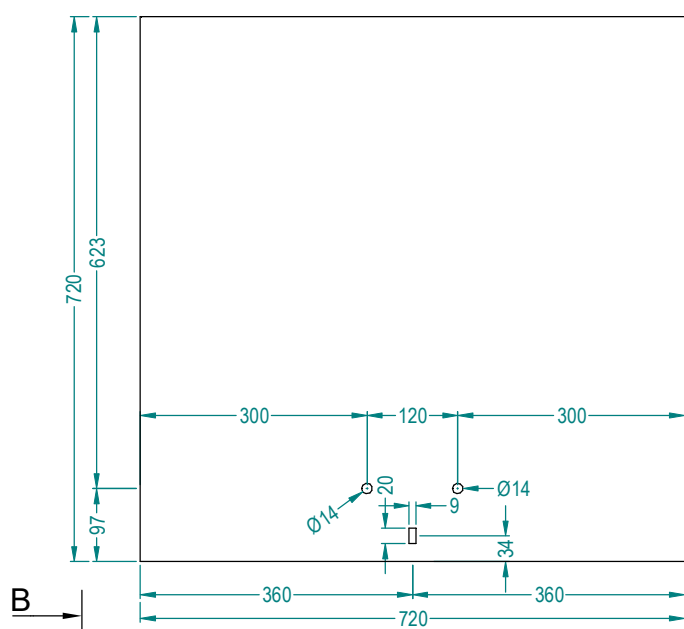
6  
scara 1:5



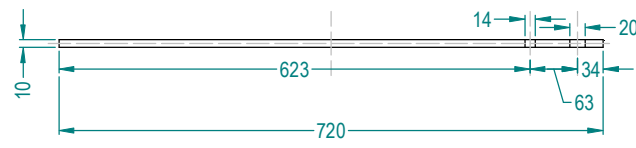
NOTA:  
- Protectia anticoroziva a suprafetelor se va realiza prin grunduire si vopsire in 2 straturi de vopsea pe baza de ulei.  
- Se sudeaza continuu, nepatruns cu o grosime maxima a cordonului de sudura de 0.7 din grosimea minima a pieselor imbinate.

Poz.	Denumire	Material	STAS	Dimensiuni	Nr. buc.	Kg/buc	Masa [Kg]
1	Tabla groasa	OL37.2K	SR EN 10029-94	350 x 80 x 10	4	2.2	8.80
2	Tabla groasa	OL37.2K	SR EN 10029-94	720 x 720 x 10	1	40.7	40.70
3	Balama	OL37	SR EN 10029-94	Ø20 x 80	2	0.2	0.40
4	Cornier	OL37	EN 10056-1	80 x 80 x 6, L= 748 mm	2	5.6	11.20
5	Cornier	OL37	EN 10056-1	80 x 80 x 6, L= 588 mm	2	4.4	8.80
6	Maner	OB 37		Ø8 mm, L= 400 mm	1	0.16	0.16
7	Tabla groasa	OL37.2K	SR EN 10029-94	24 x 16 x 5	1	0.02	0.02
TOTAL							70.1

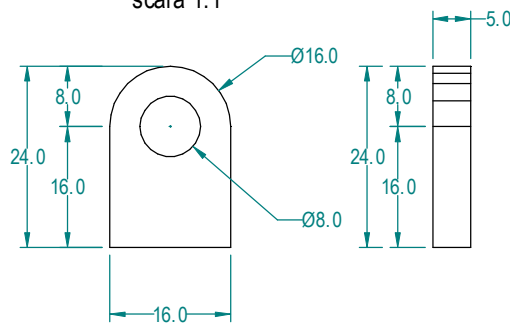
2 - 720 x 720 x 10  
scara 1:10



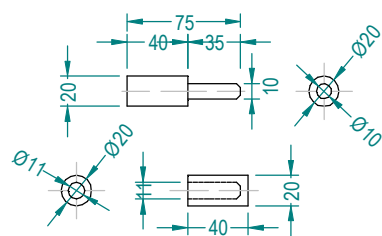
Vedere B - B  
scara 1:10



7  
scara 1:1



3 - Balama  
scara 1:5



Verificator/ Expert	Nume	Semnatura	Cerinta	Referat / Expertiza Nr. / Data		
S.C. SNIF PROIECT S.A. Targoviste Numar de inmatriculare J15/925/2005			Beneficiar: CONPET S.A. PLOIESTI		Pr. nr. 368/2018	
Specificatie	Nume	Semnatura	Scara: 1:10 1:5 1:1	„Înlocuirea unui tronson din conducta de țigeli Ø8 5/8" Lucăcești - Vermești, pe tronsonul Stația Lucăcești - deal Măgura în lungime de cca. 2 km + racordul către rampa de încărcare țigeli Moinești de 6" în lungime de 700m"		Faza PT+CS+DE
Sef proiect	Ing. Vlasceanu Catalin					
Desenat	Ing. Radu Florin		Data: 2019	Detaliu capac vizitare camin		Pl. nr. 12
Proiectat	Ing. Costea Paul					